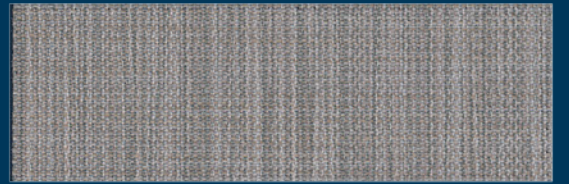


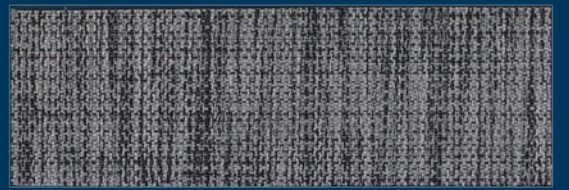
1



2



3



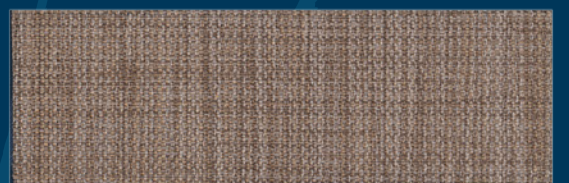
4



5



6



7

KOS

Composizione: <i>Composition:</i> <i>Composition:</i> <i>Composición:</i>	100% Polyestere				
Peso: <i>Weight:</i> <i>Poids:</i> <i>Peso:</i>	245 g/m ²				
Spessore (mm): <i>Thickness:</i> <i>Epaisseur:</i> <i>Espesor:</i>	0,41				
Altezza tessuto (mm): <i>Width:</i> <i>Largeur:</i> <i>Ancho:</i>	3000				
Comportamento alla fiamma: <i>Flammability:</i> <i>Reaction au feu:</i> <i>Reaccion al fuego:</i>	non ignifugo <i>not fire-retardant</i> <i>flamable</i> <i>ignifugo</i>				
Stabilità alla luce (DIN EN ISO 105 B02): <i>Light Fastness:</i> <i>Solidité lumière:</i> <i>Solidez de los colores:</i>	8				
Fattore di apertura: <i>Openess Factor:</i>	1%				
Manutenzione: <i>Cleaning Instruction:</i> <i>Instrucción de lavage:</i> <i>Instrucciones de limpieza:</i>	pulire con panno umido <i>spongeable</i> <i>avec éponge</i> <i>lavar con trapo humedo</i>				
REF.	AS	RS	TS	TV	GTOT ENI4501
1	10,60	55,60	33,80	33,52	0,43
2	35,71	40,66	23,62	18,74	0,51
3	46,20	32,98	20,82	14,71	0,55
4	69,38	21,97	8,65	7,43	0,60
5	24,29	46,56	29,15	25,23	0,48
6	40,18	37,59	22,23	17,94	0,52
7	57,53	26,60	15,87	10,73	0,58

TS: Trasmissione Solare / *Solar Transmittance (%)*

TV: Trasmissione Luce / *Transmittance of Visible radiation (%)*

RS: Riflessione Solare / *Solar Reflectance (%)*

AS: Assorbimento Solare / *Solar Absorptance (%)*